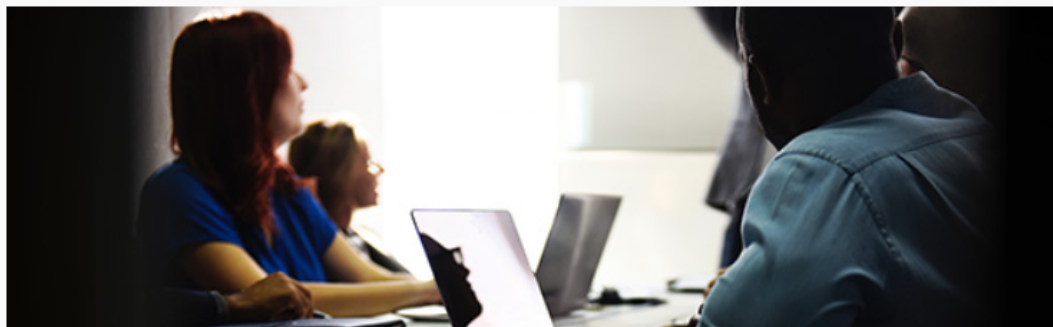


Identify Business Requirements



During the initial phase of the Software Development Life Cycle (SDLC) we conduct meetings, webinars, and interviews with the sponsor, key stakeholders and eventual system users. This phase is meant to dig deep into the details of what is important to a client's business, target audience, and industry.

Once we feel comfortable that we completely understand the tasks at hand, we move to define the scope of the project and agreement deliverable.

[SCHEDULE A DEMO](#)

Integrated data profiling

- Accelerates data discovery
- Focuses on data with analytics potential

Define design strategy

- Prebuilt strategies for Kimball, Inmon, Hybrid DWA Recommended Approach, and Data Vault

Analyze existing logic

- Parse SQL to get used columns and tables

We are exhibiting at

2018 HIMSS



Sands Expo Center
Las Vegas, NV
March 5-9, 2018

Booth 14060

Add to My Exhibitors

Register Now

Powered by 